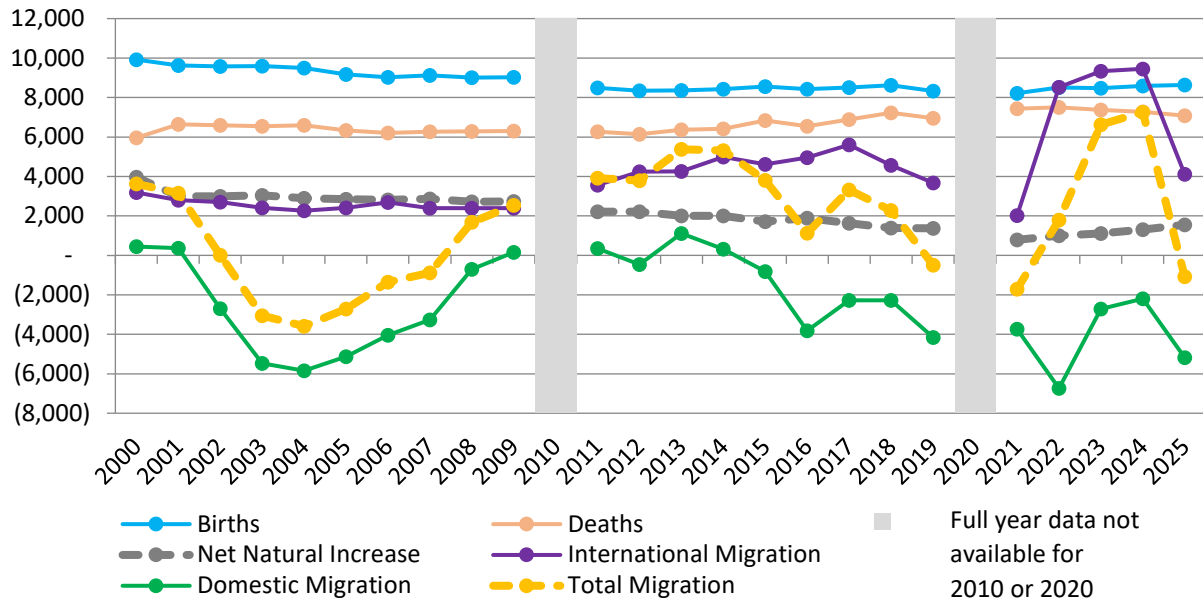
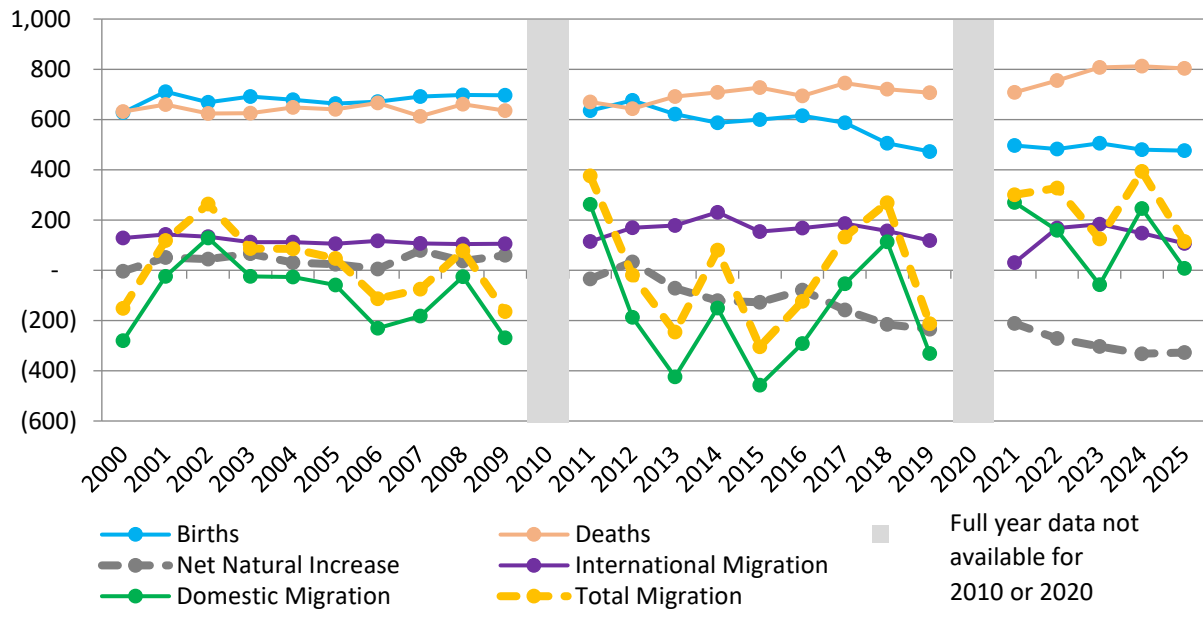
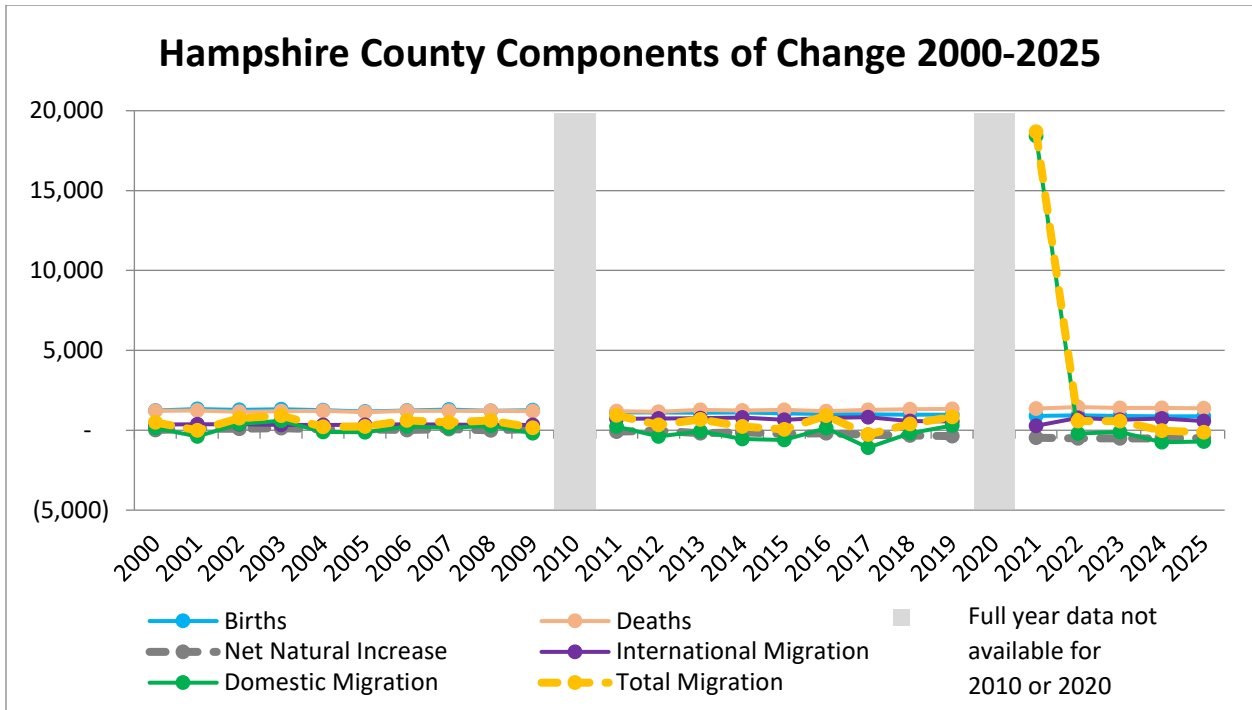
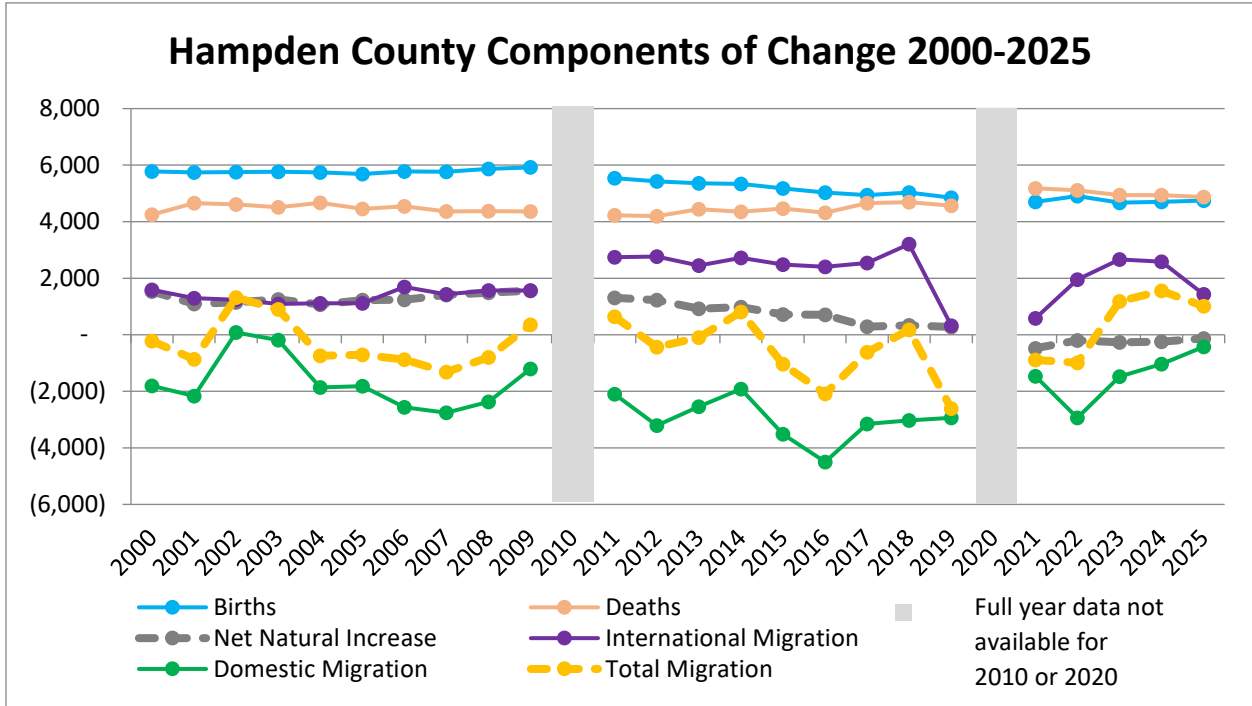


### Essex County Components of Change 2000-2025

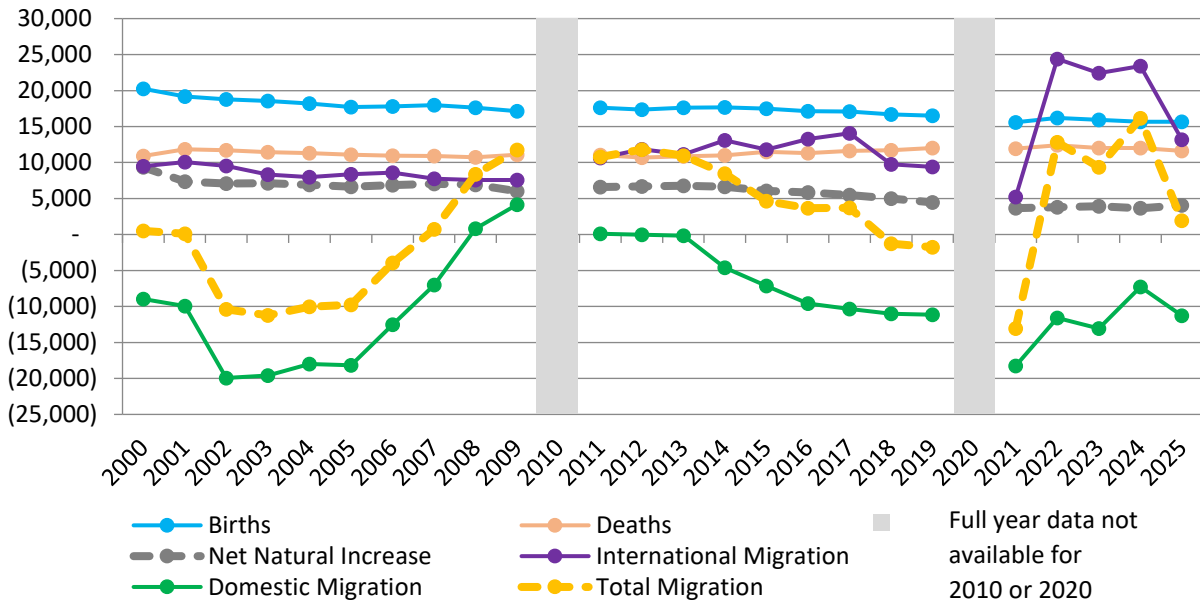


### Franklin County Components of Change 2000-2025

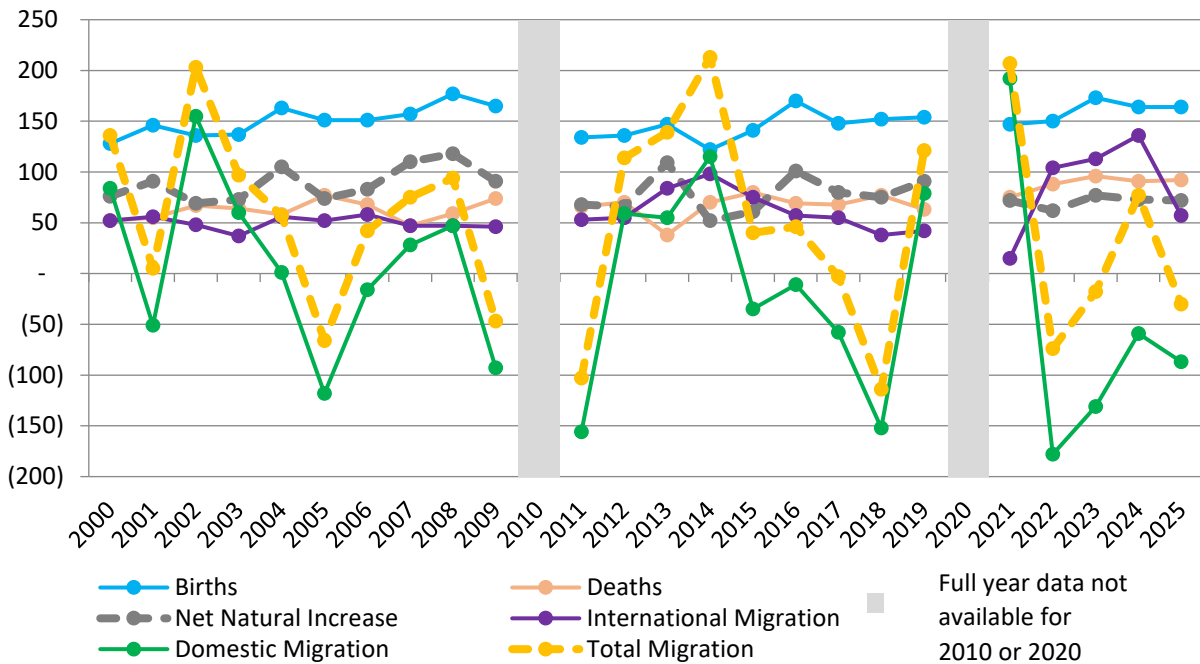


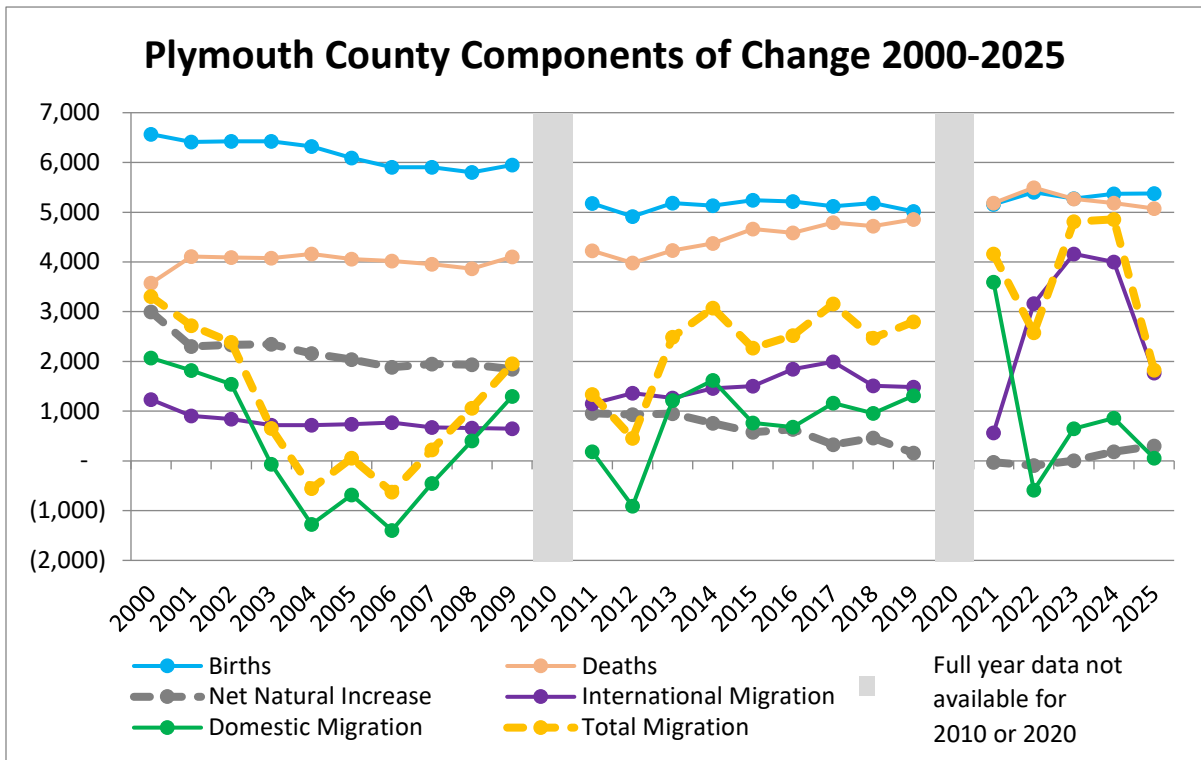
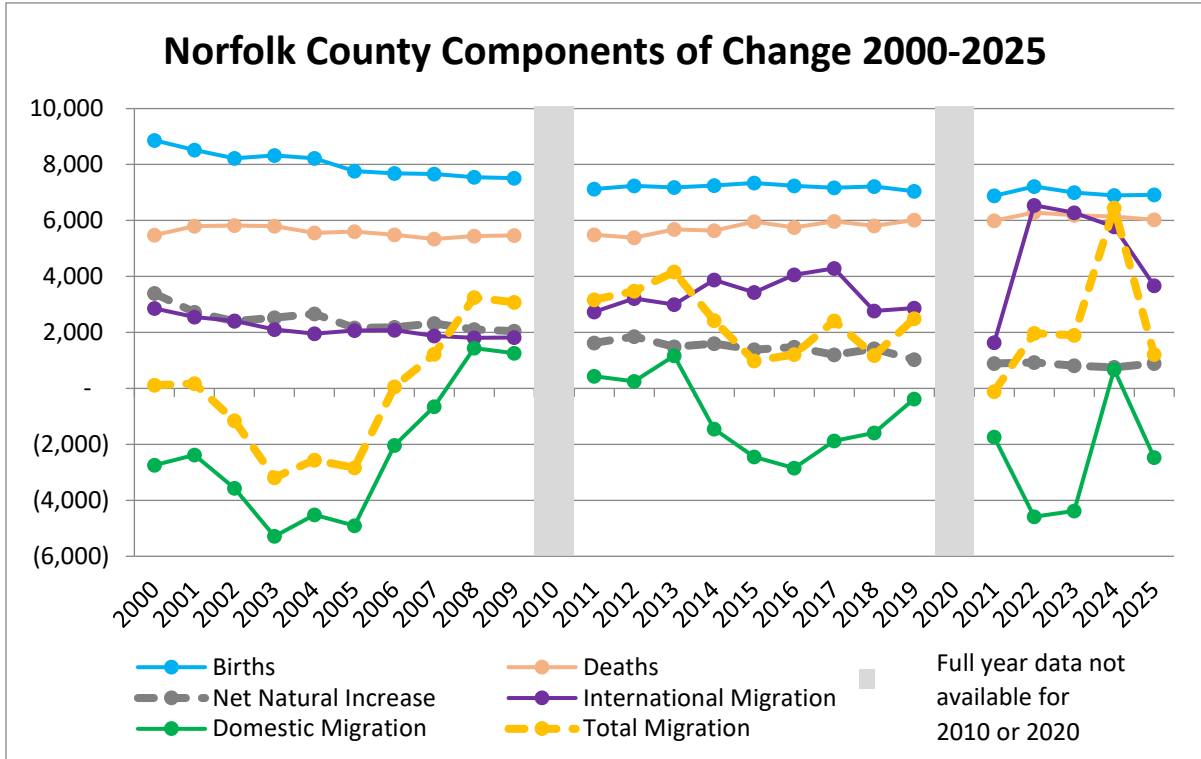


### Middlesex County Components of Change 2000-2025

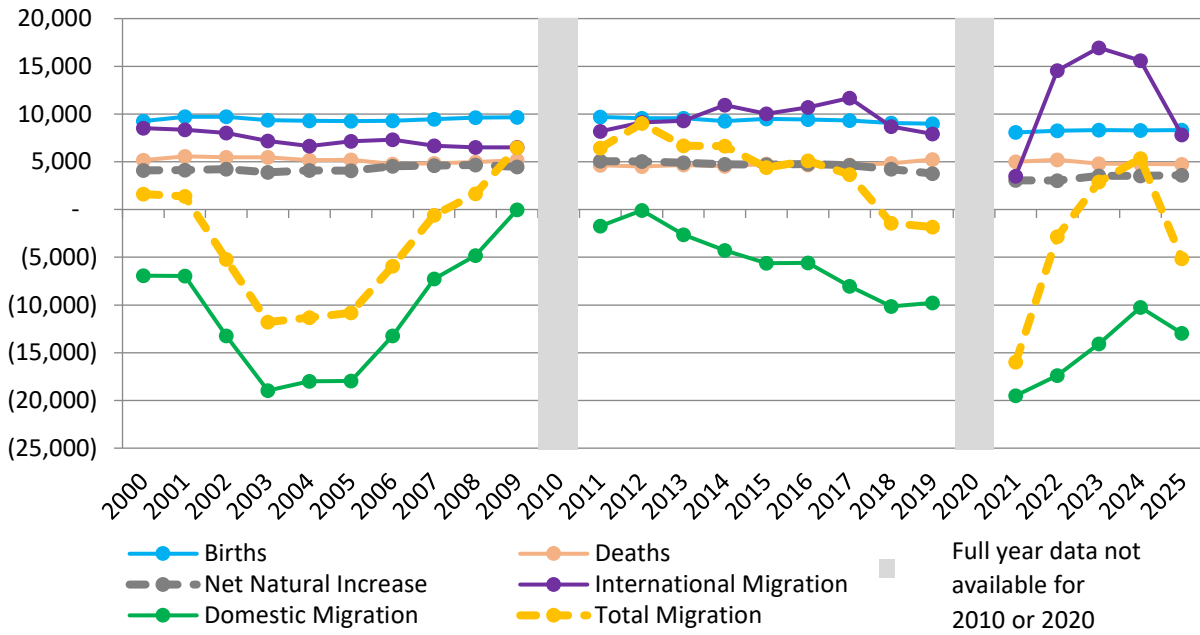


### Nantucket County Components of Change 2000-2025

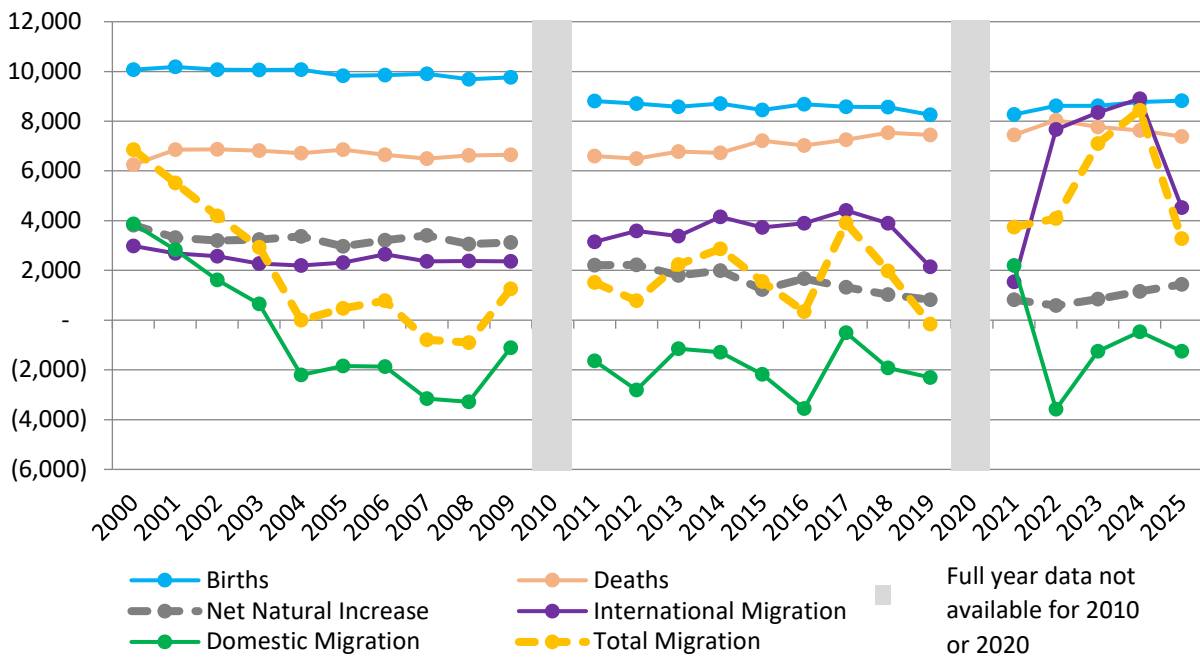




### Suffolk County Components of Change 2000-2025



### Worcester County Components of Change 2000-2025



Appendix to *UMDI Summary of the U.S. Census Bureau's Vintage 2025 County-Level Population and Component Estimates for Massachusetts, March 26, 2026*

\*The 2010 and 2020 values have been taken out of this time series due to the Census Bureau only providing a 3-month period for the entire census year which complicates trends over time.

UMass Donahue Institute. Sources: U.S. Census Bureau Population Division, CO-EST2009-04-25, CO-EST2020-ALLDATA, and CO-EST2025-ALLDATA, Release dates March 2010, May 2021, and March 2026.