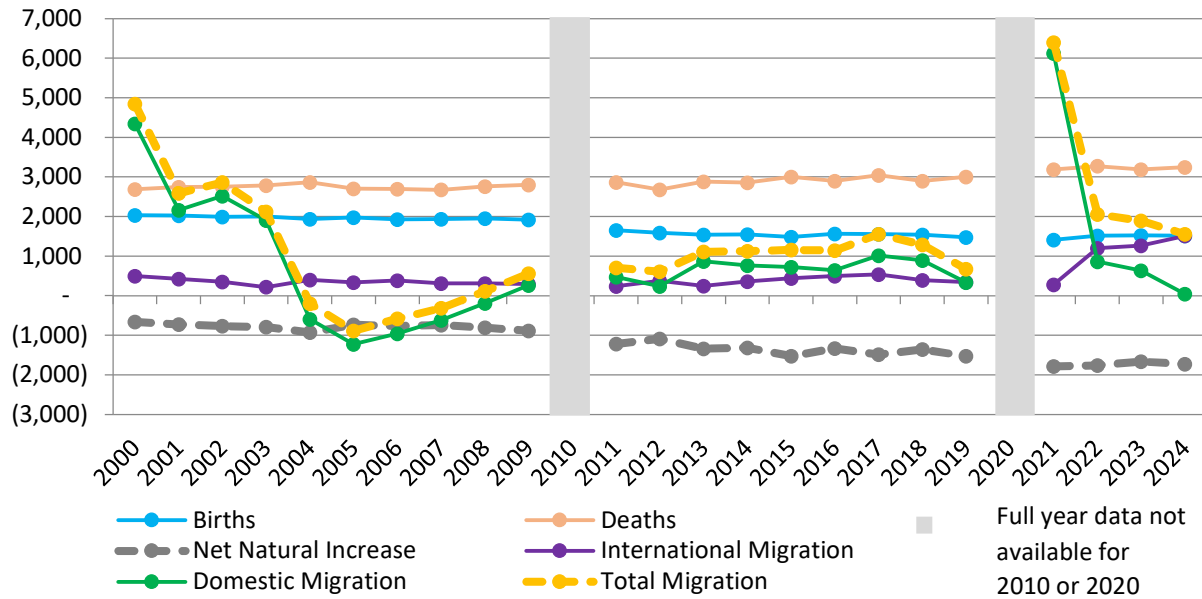
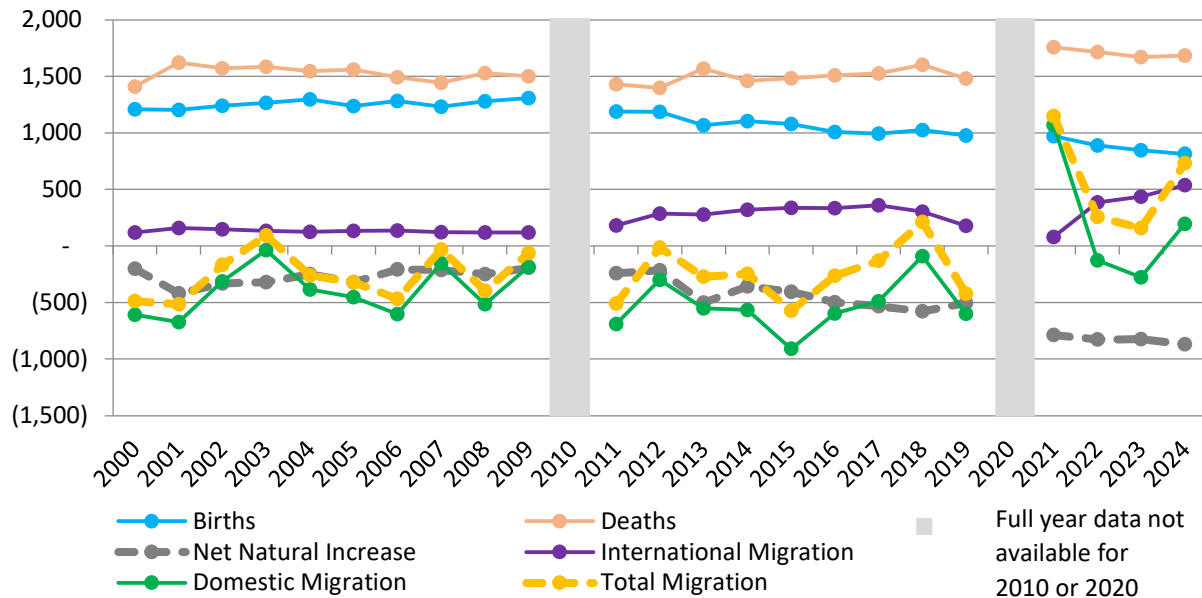
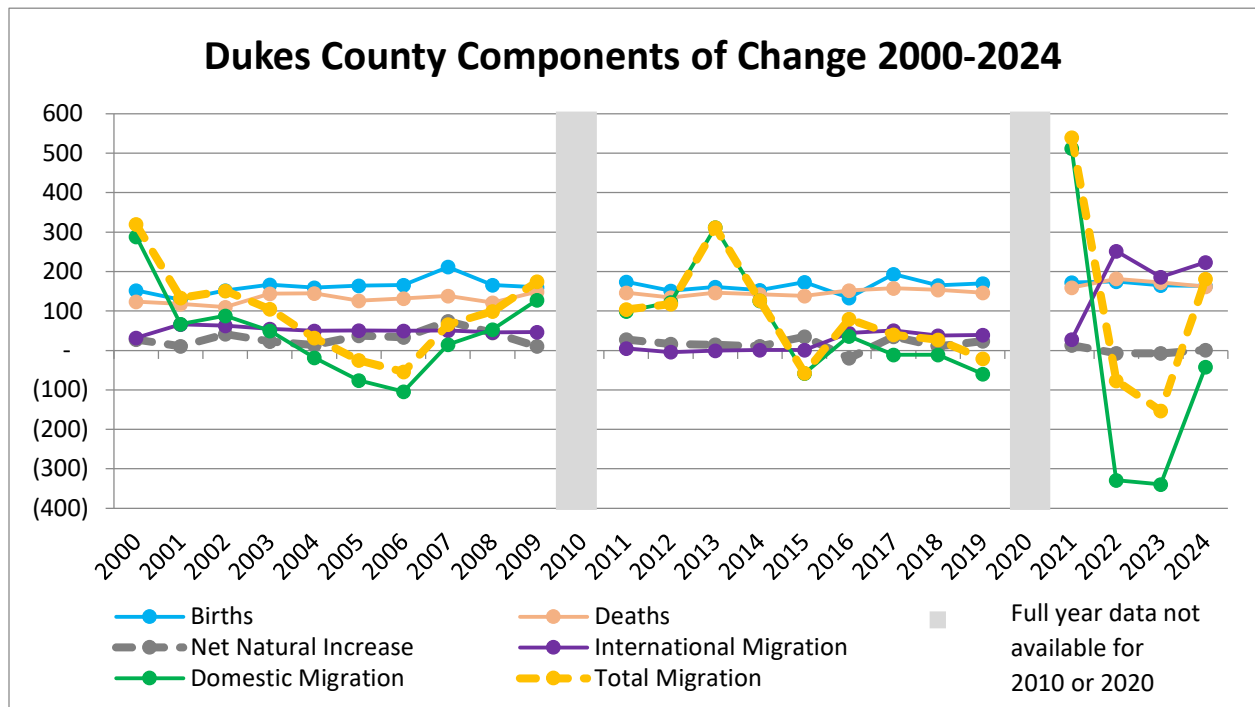
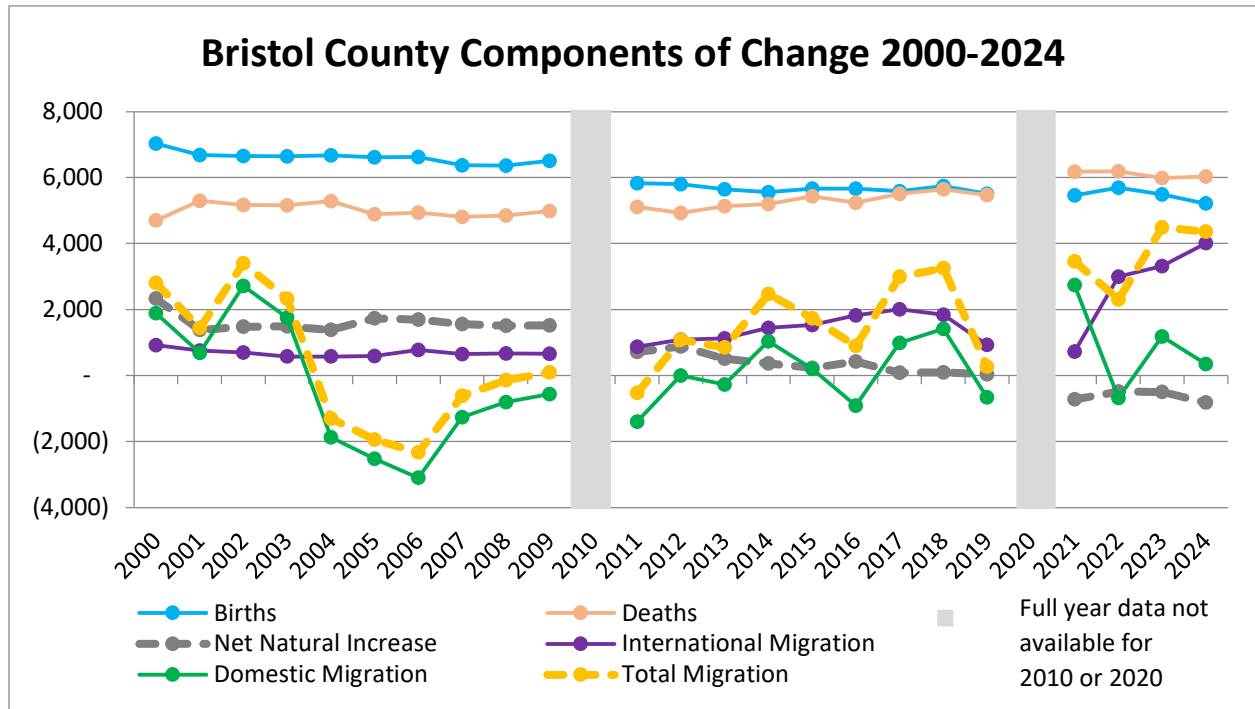


Barnstable County Components of Change 2000-2024

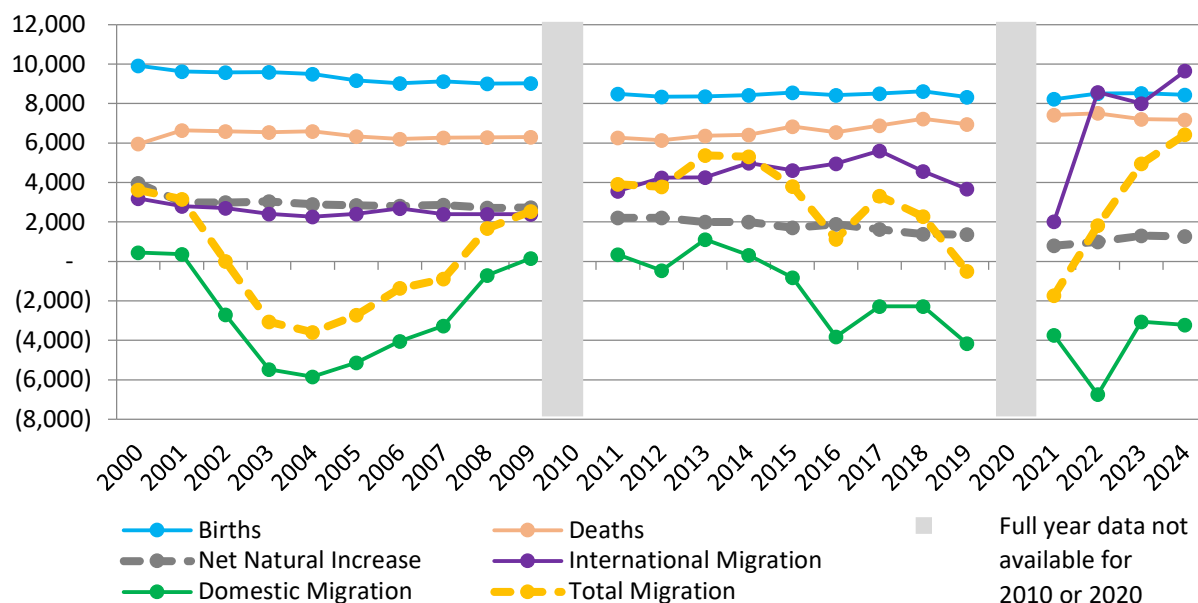


Berkshire County Components of Change 2000-2024

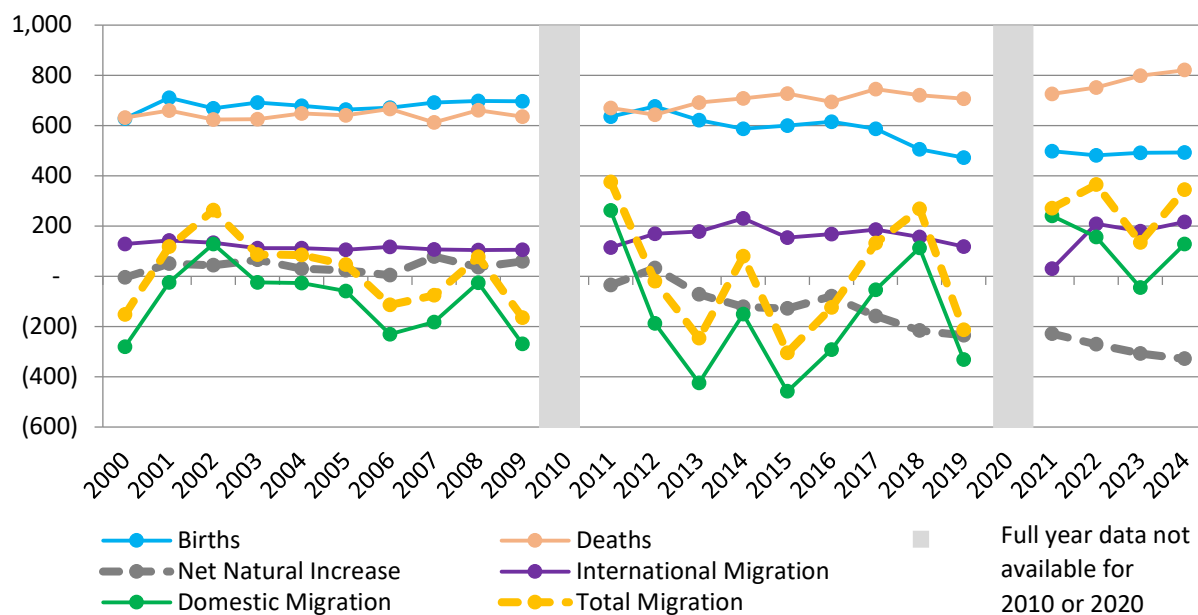


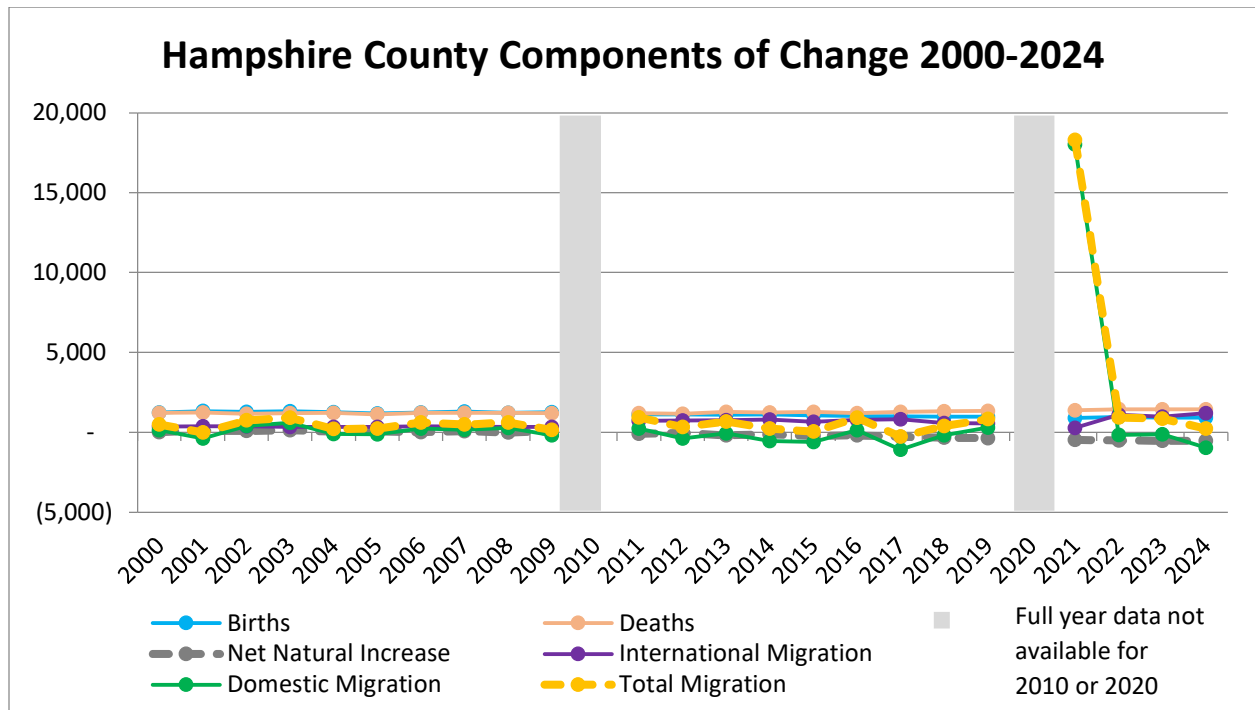
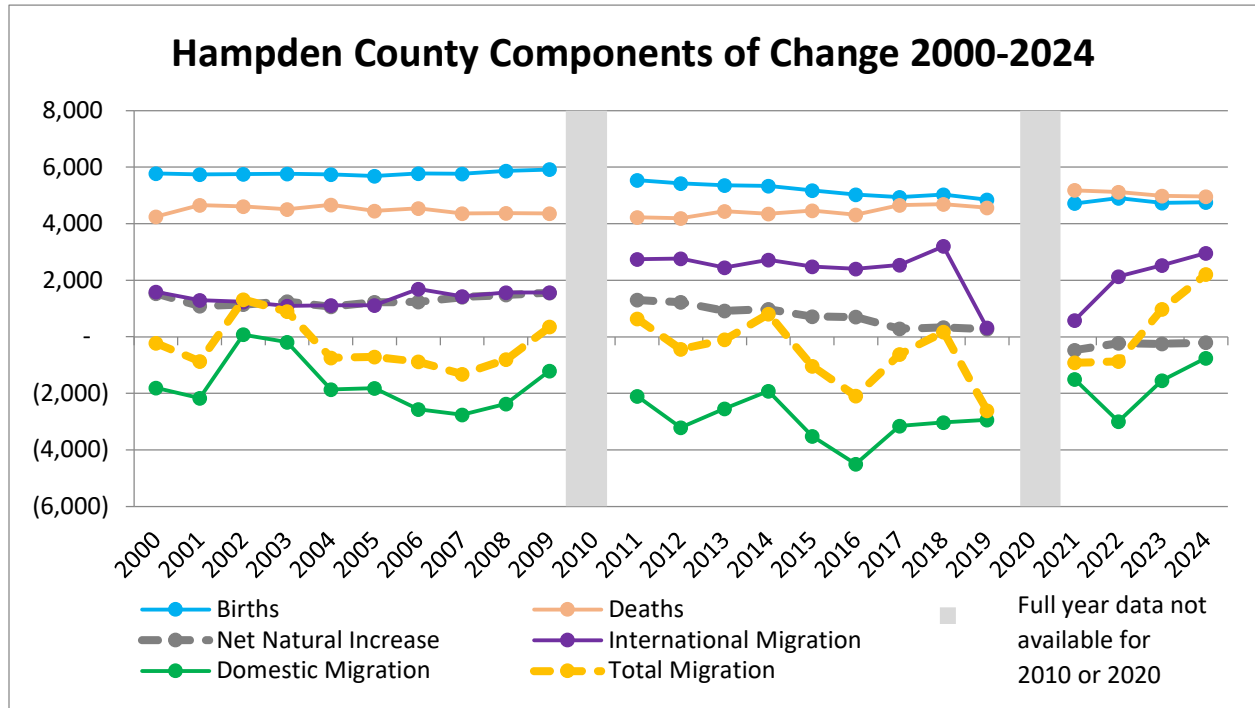


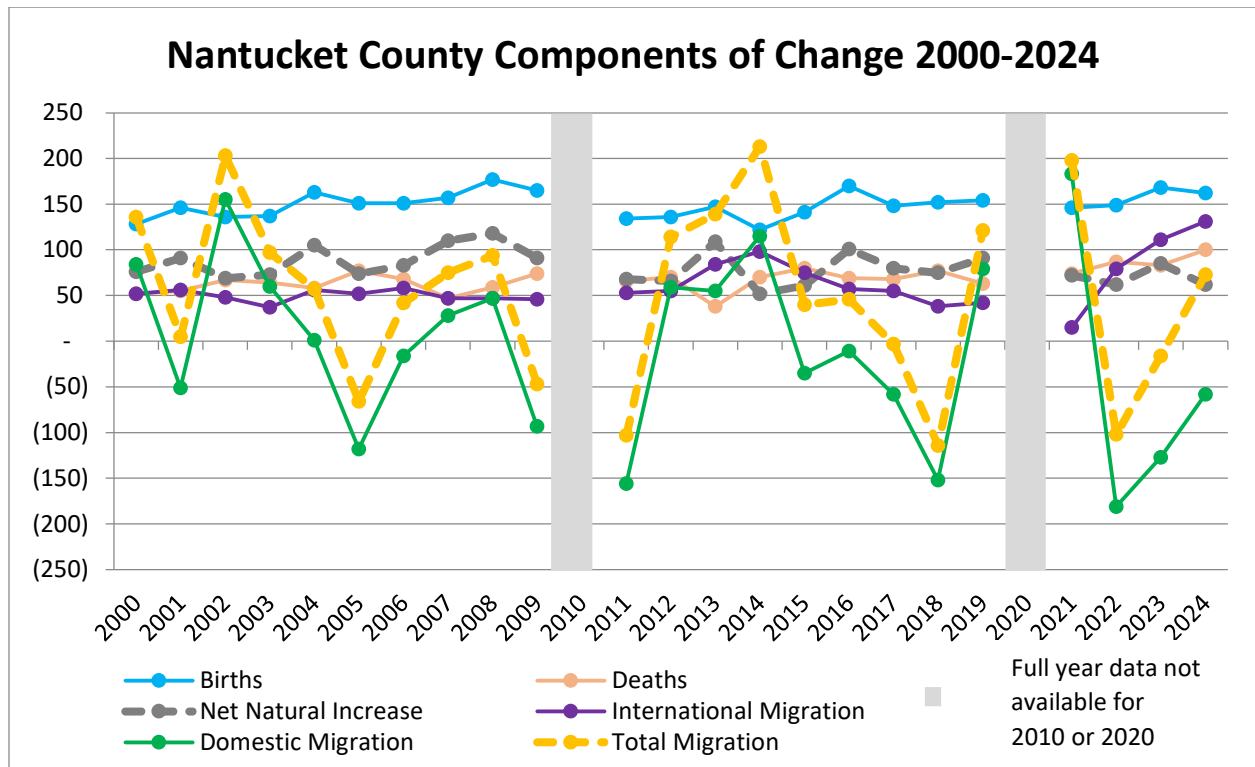
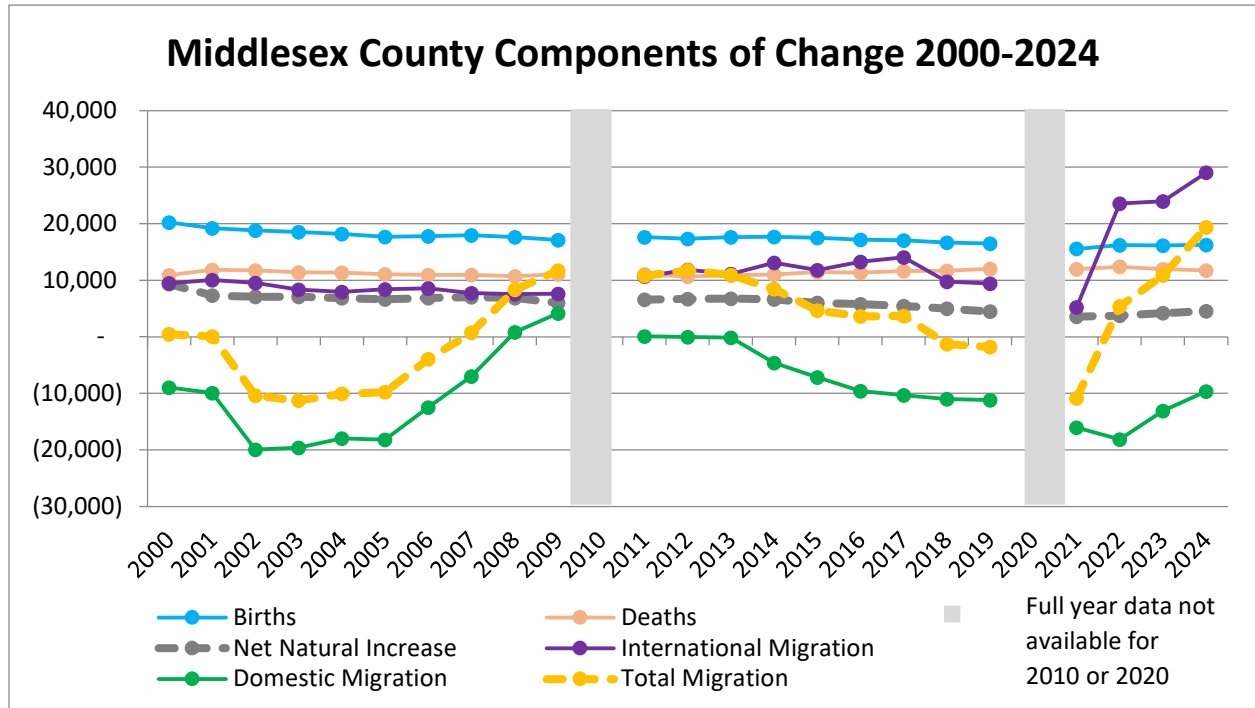
Essex County Components of Change 2000-2024

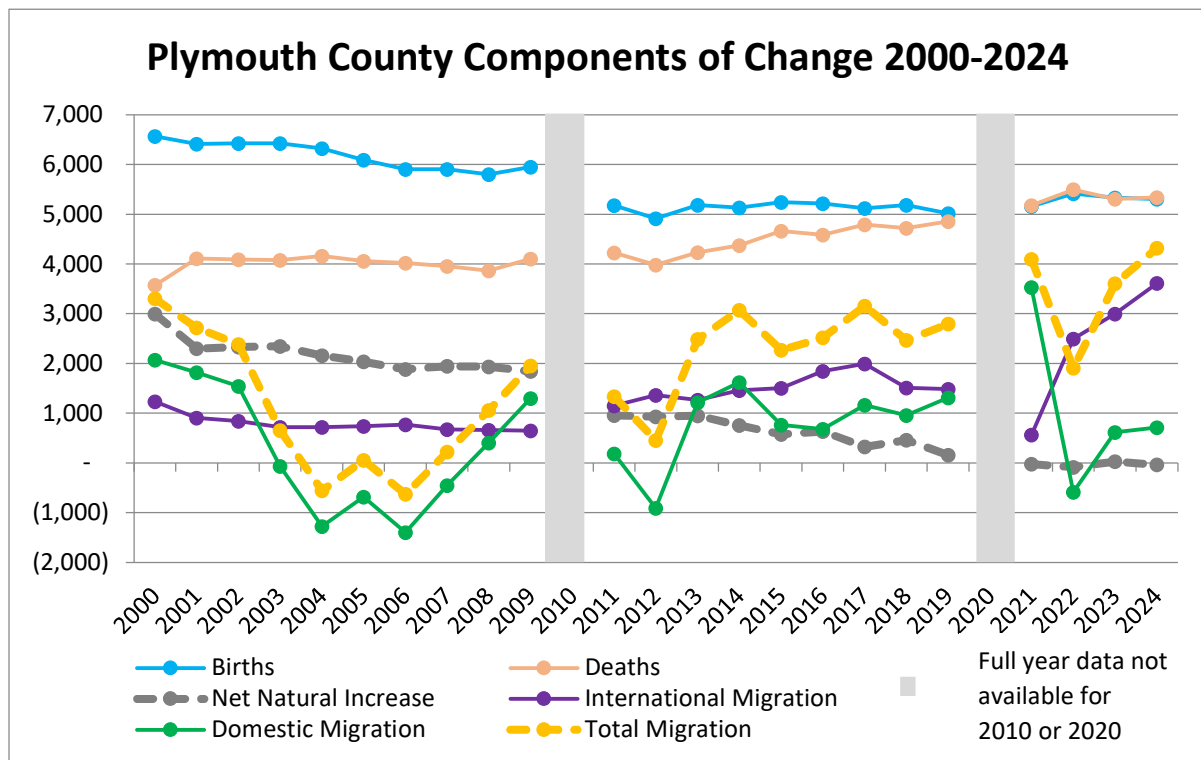
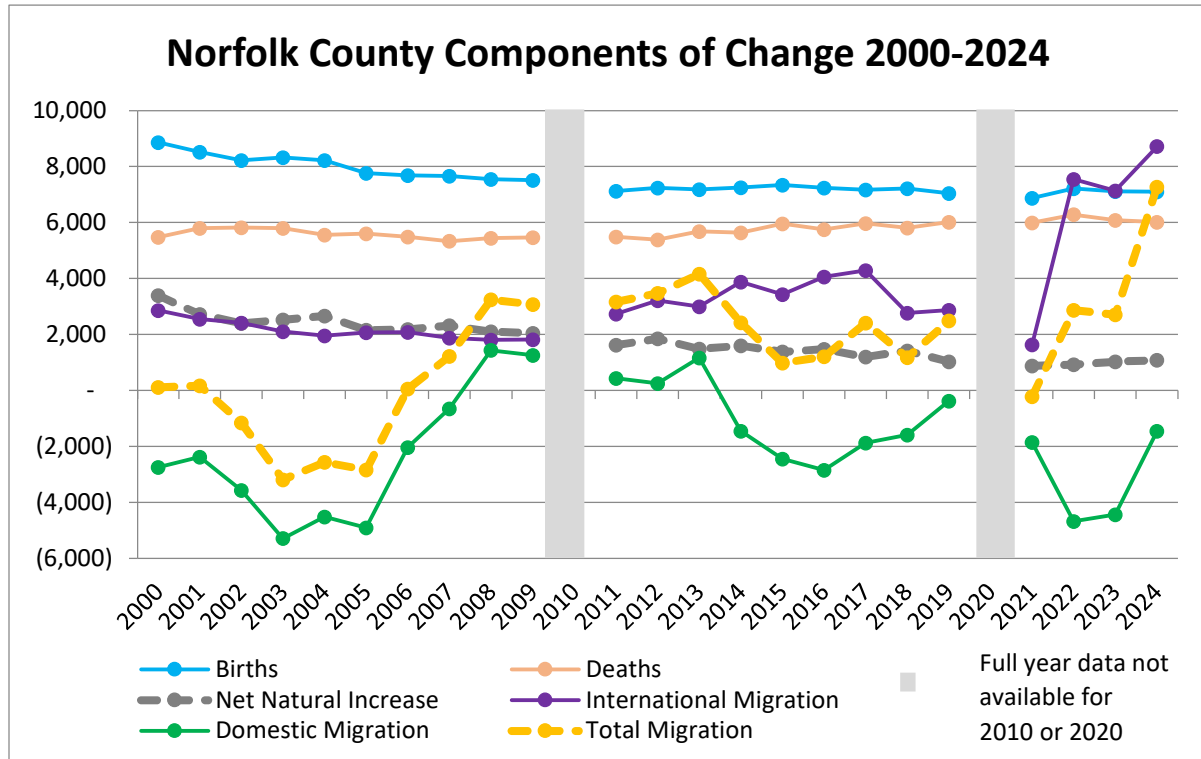


Franklin County Components of Change 2000-2024

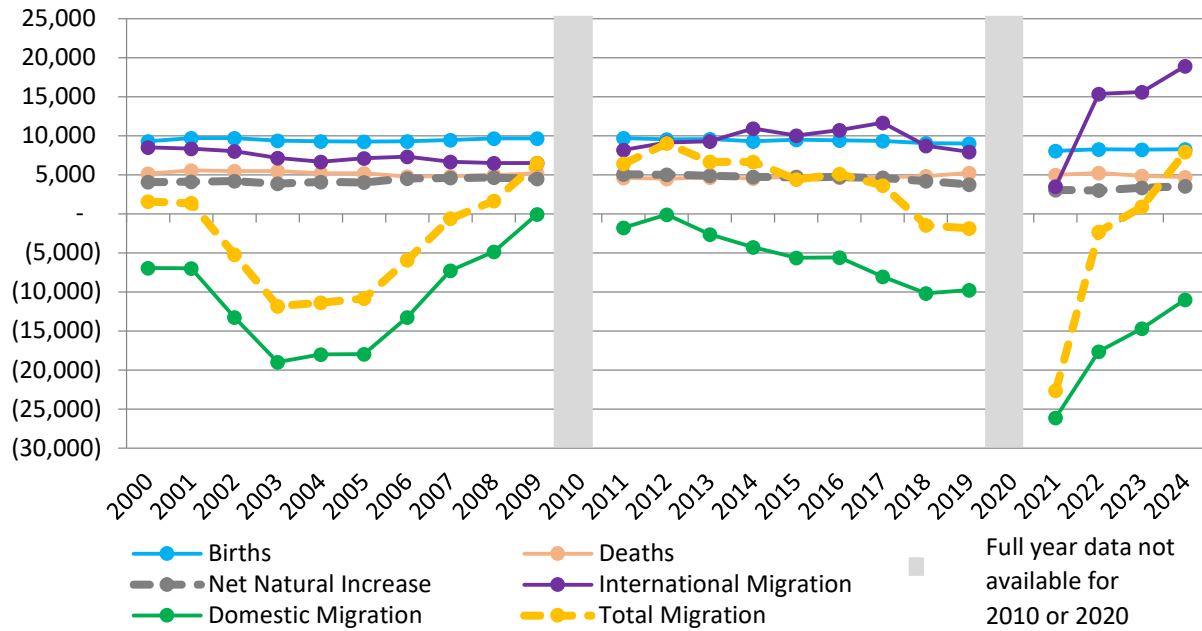




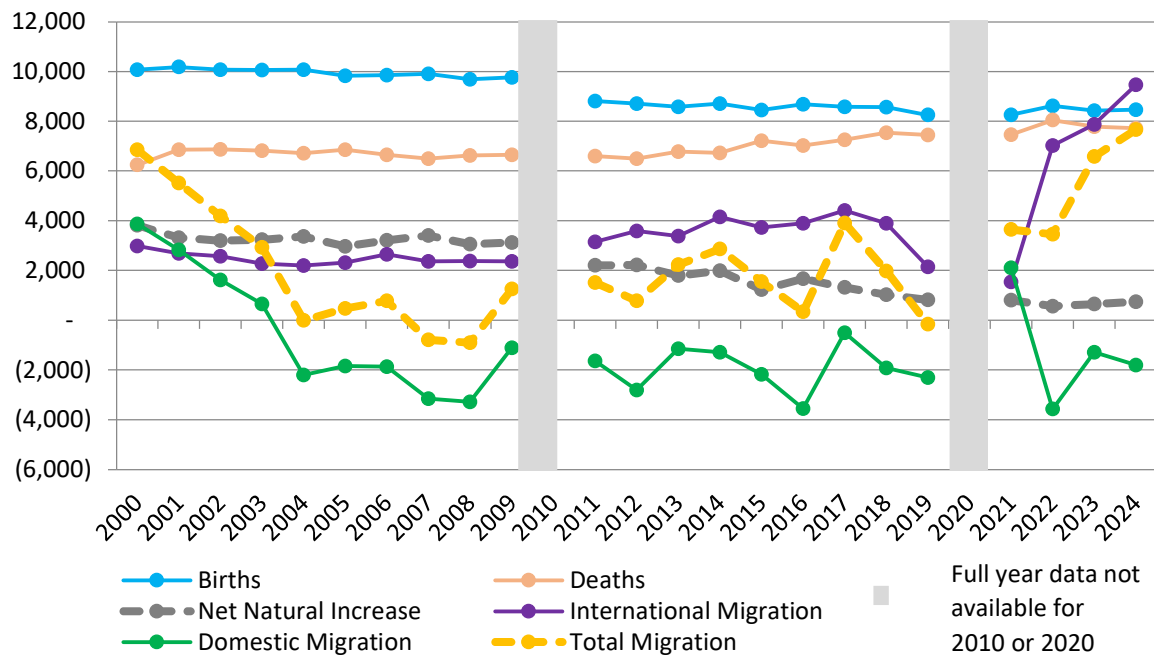




Suffolk County Components of Change 2000-2024



Worcester County Components of Change 2000-2024



Appendix to *UMDI Summary of the U.S. Census Bureau's Vintage 2024 County-Level Population and Component Estimates for Massachusetts*, March 13, 2025

*The 2010 and 2020 values have been taken out of this time series due to the Census Bureau only providing a 3-month period for the entire census year which complicates trends over time.

UMass Donahue Institute. Sources: U.S. Census Bureau Population Division, CO-EST2009-04-25, CO-EST2020-ALLDATA, and CO-EST2024-ALLDATA, Release dates March 2010, May 2021, and March 2025.